



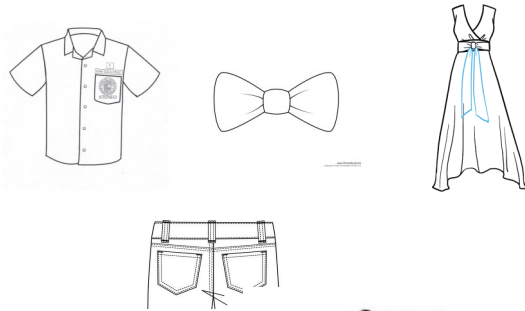
3 Keys to Success in Barcode Label Application

• Time



Application Time

5-7 Seconds



• Temperature



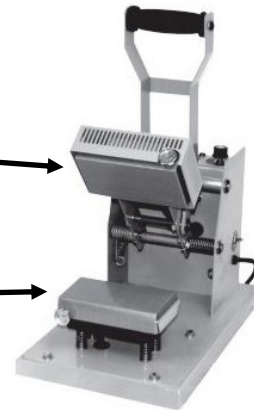
TOP HEAT

250°-270° F

120°-133° C

BOTTOM HEAT

none required



• Pressure



2" x 4" PLATEN

25 - 30 psi (air)

3" x 5" PLATEN

50 - 60 psi (air)

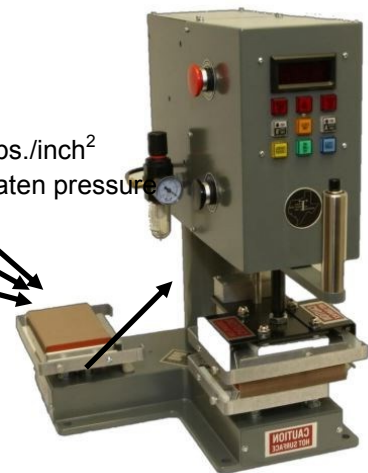
4" x 6" PLATEN

70 - 85 psi (air)

3-1/4" x 5" GOOSENECK

55 - 65 psi (air)

25-28 lbs./inch²
 inter-platen pressure



NOTE: Cold Peel Backing Removal. Wait until label has cooled to room temperature before removing paper backing.

For more information on application, heat seal machine settings, trouble shooting:
 see our website ipc-tags.com and click on 'Resources and Links' and then click on 'Application Specs for L Temp. HT Labels'.

For ordering labels, prices, or more information contact Amber@ipc-tags.com

Customer Service: 817-714-8400 • Order Fax: (817) 887-1725 • Corporate (972) 822-0934